

# STANDING STEADY

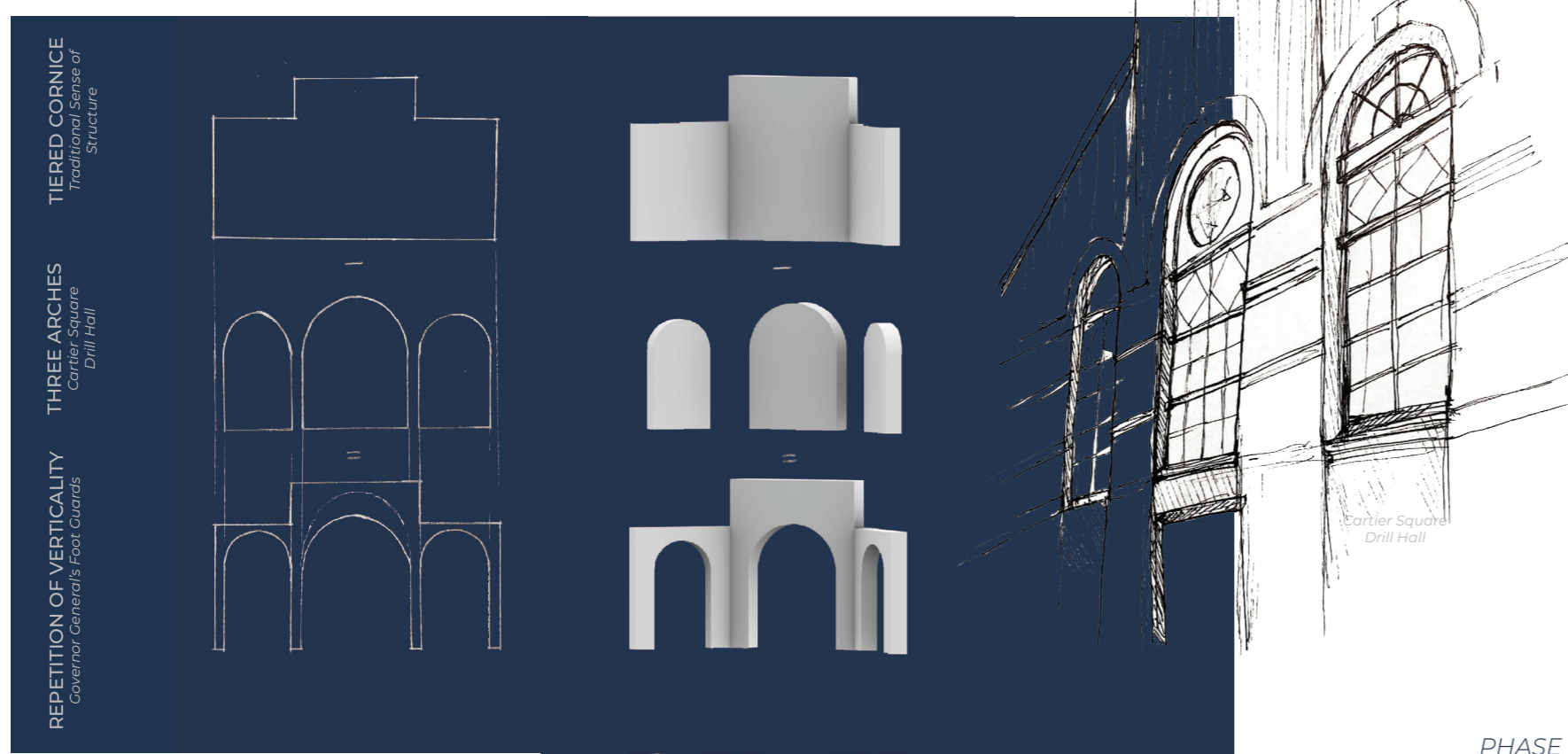
## COMMEMORATIVE SOUTHEAST ENTRY GATE TO CONFEDERATION PARK

ARCS 3302 - CONSERVATION STUDIO II  
AZRIELI SCHOOL OF ARCHITECTURE & URBANISM  
CARLETON UNIVERSITY  
OTTAWA, CAN

ERIKA COLMENARES-DI MARIA & TESS COMAN  
INSTRUCTOR | LYETTE FORTIN

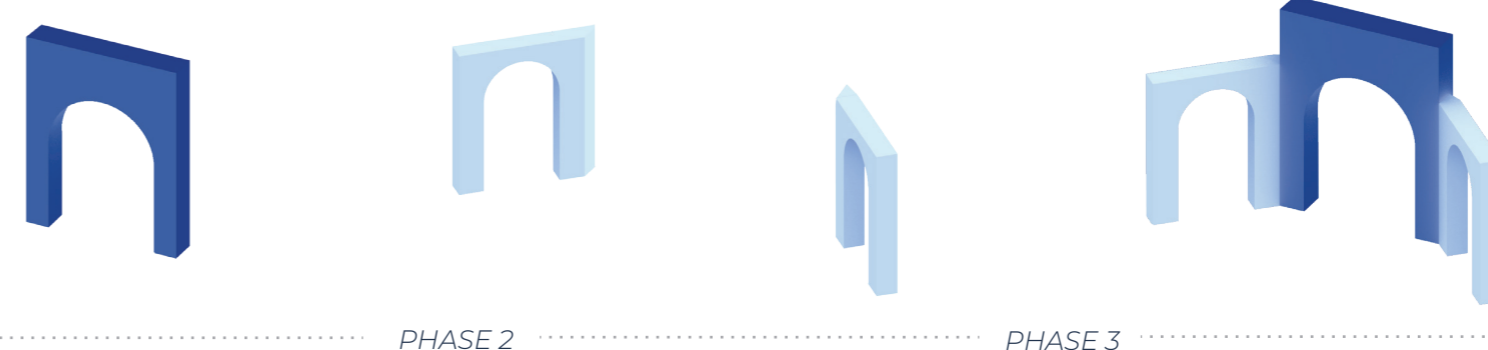
JANUARY 29, 2022

### ARCHITECTURAL "PARTI"



### PROJECT STATEMENT

The proposed Southeast entrance to Confederation Park will be a bold landmark which reflects the commitment of The Governor General's Foot Guards to Canada, in the context of the Park found within Canada's Capital. The design concept will represent the values which the GGFG holds to utmost importance, duty and honour. The proposed entryway will connect Confederation Park and the Cartier Square Drill Hall, by both location and architectural design. The design acknowledges the gate as an entrance and as an exit, and also as a site where the characteristics and values of the Regiment and Confederation Park will meet.



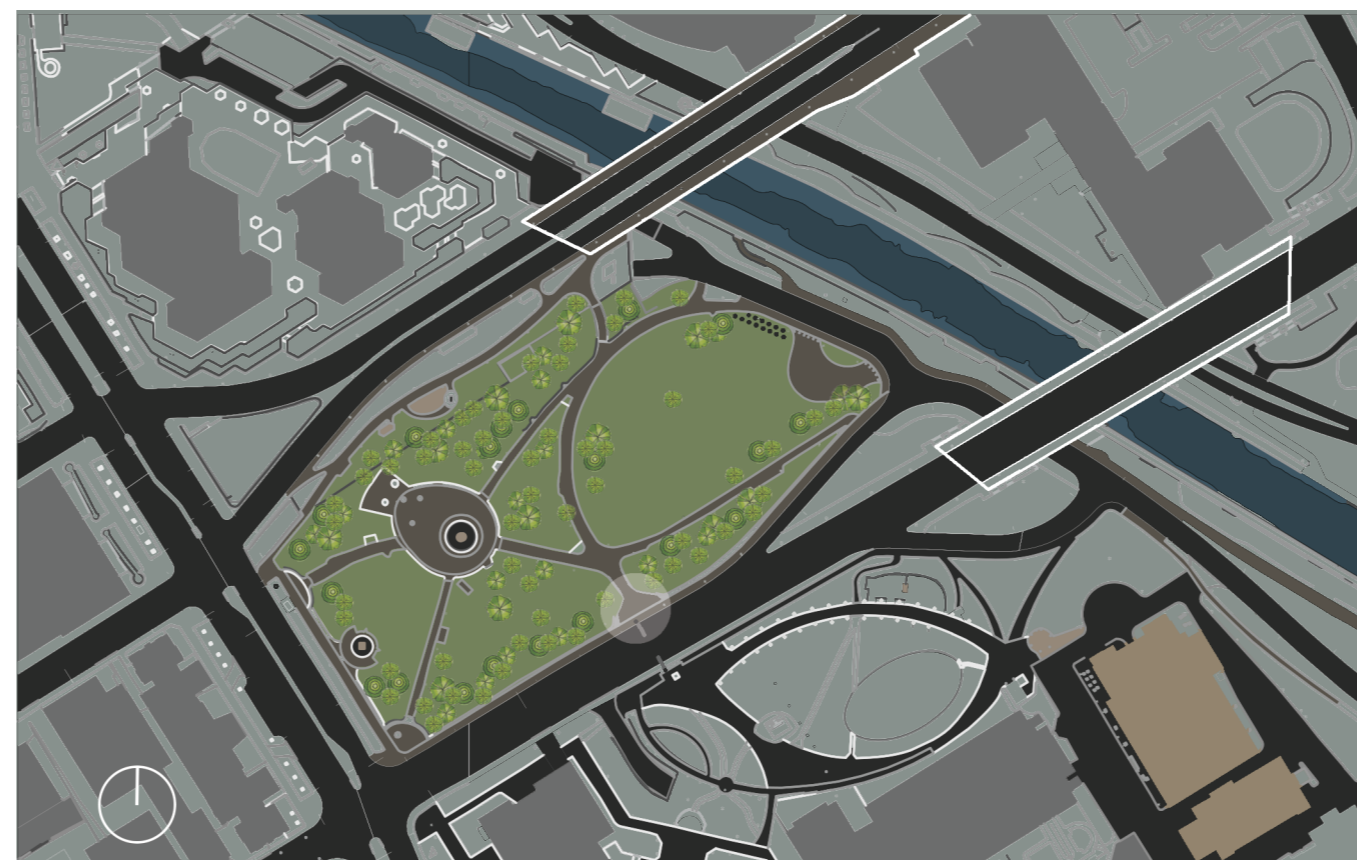
**FROM INTANGIBLE TO TANGIBLE**  
Representing intangible values as tangible elements of the new entryway. Values such as honour and duty, which are embodied by the Governor General's Foot Guards, will as of utmost importance to visually represent to the public.

**A SCALABLE DESIGN**  
To allow flexibility within the budget, the design must be able to be built in stages. In doing so the proposed entry is scalable and can be visualised in segments which make up a whole.

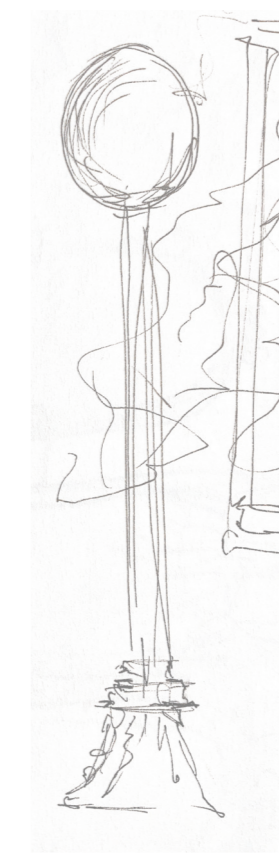
### PLAN VIEW BEFORE INTERVENTION 1:200



### CONTEXT PLAN 1:3000



- CONFEDERATION PARK
- RIDEAU CANAL
- CARTIER SQUARE DRILL HALL



### CHALLENGES & OPPORTUNITIES

**SUSTAINABLE YET TRADITIONAL**  
As more and more sustainable approaches are being taken in the field of conservation, this new entrance should contribute to the shift to sustainable design while also maintaining traditional design elements, as per the client's vision. Proper use of materials and traditional techniques can be used to improve the life cycle of the proposed monument.

**POSTCARD WORTHY**  
Designing in a way which will make visitors to stop and take pictures. In trying to make the commemorative entrance become an iconic representation of the Governor General's Foot Guards which becomes 'postcard worthy'.

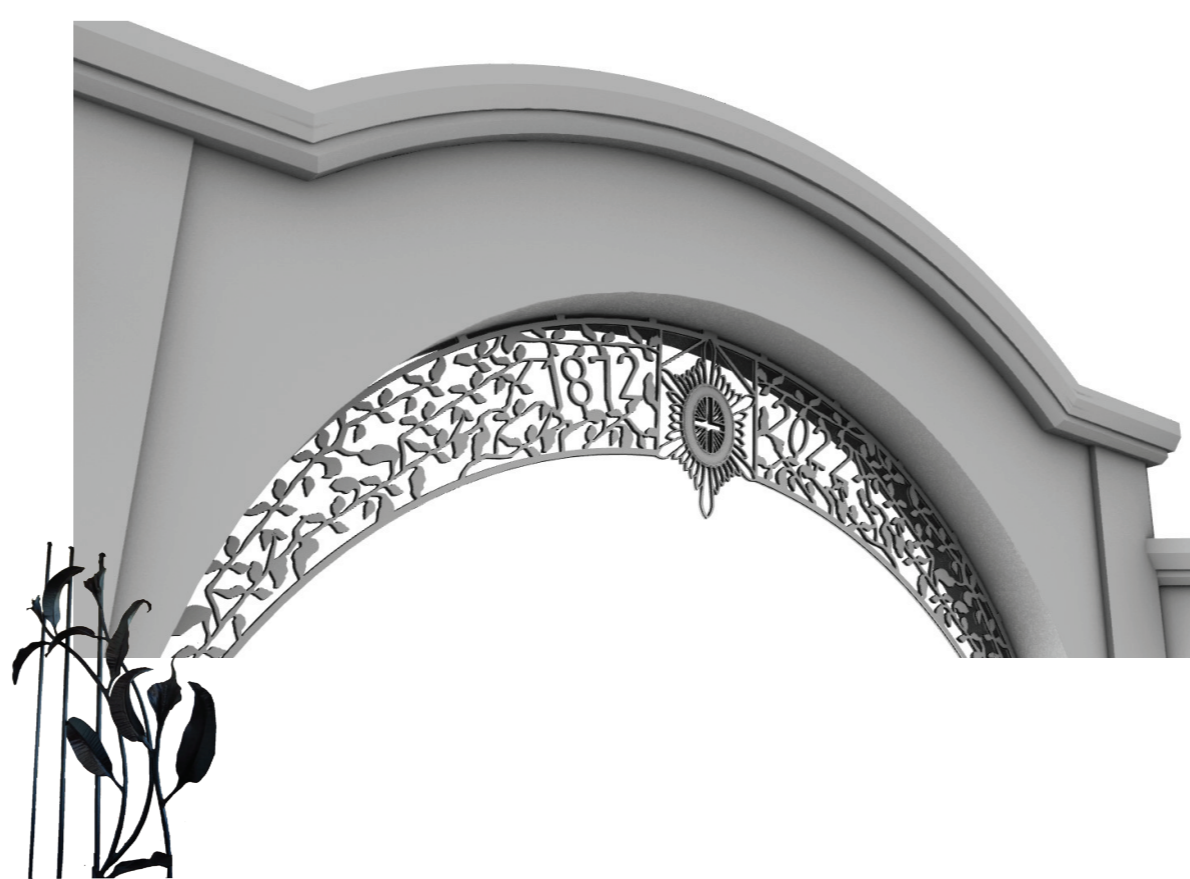
**CONFEDERATION IN RECONCILIATION**  
Understanding that the park encompasses more than just the history of confederation because of the land on which it sits.

**ADDRESSING CONTEXTS**  
Fitting the design into both its urban context and its natural context. This proposed entrance marks a shift from the city into Confederation Park, and therefore it must reflect that change in scenery.

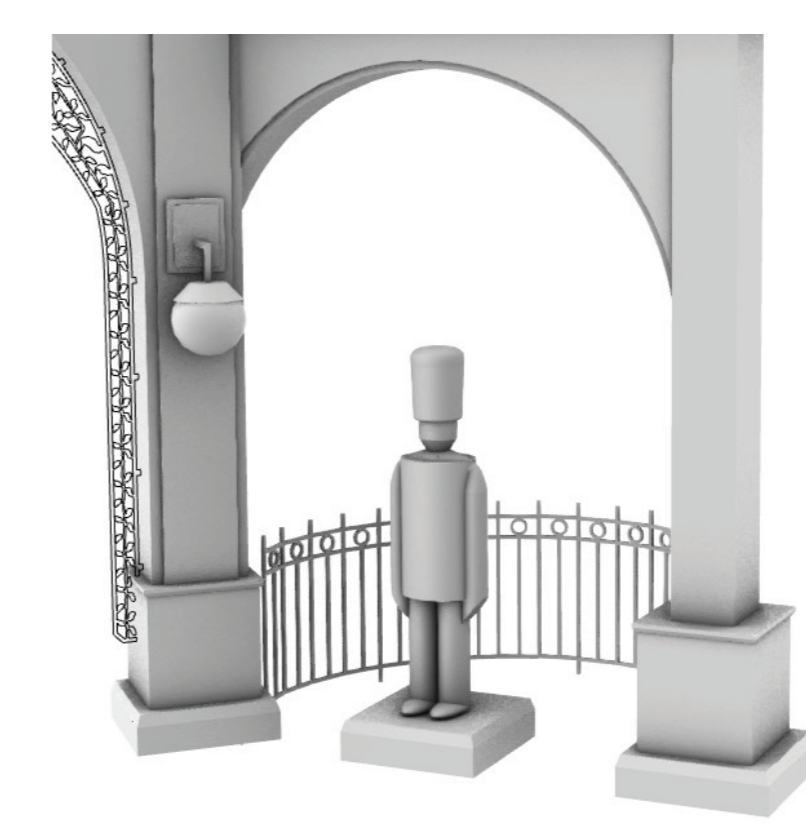
### PLAN VIEW AFTER INTERVENTION 1:200



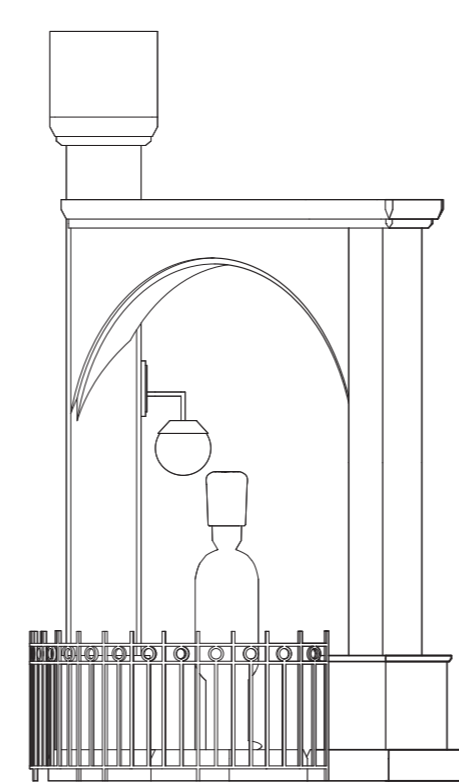
### IRONWORK DETAIL



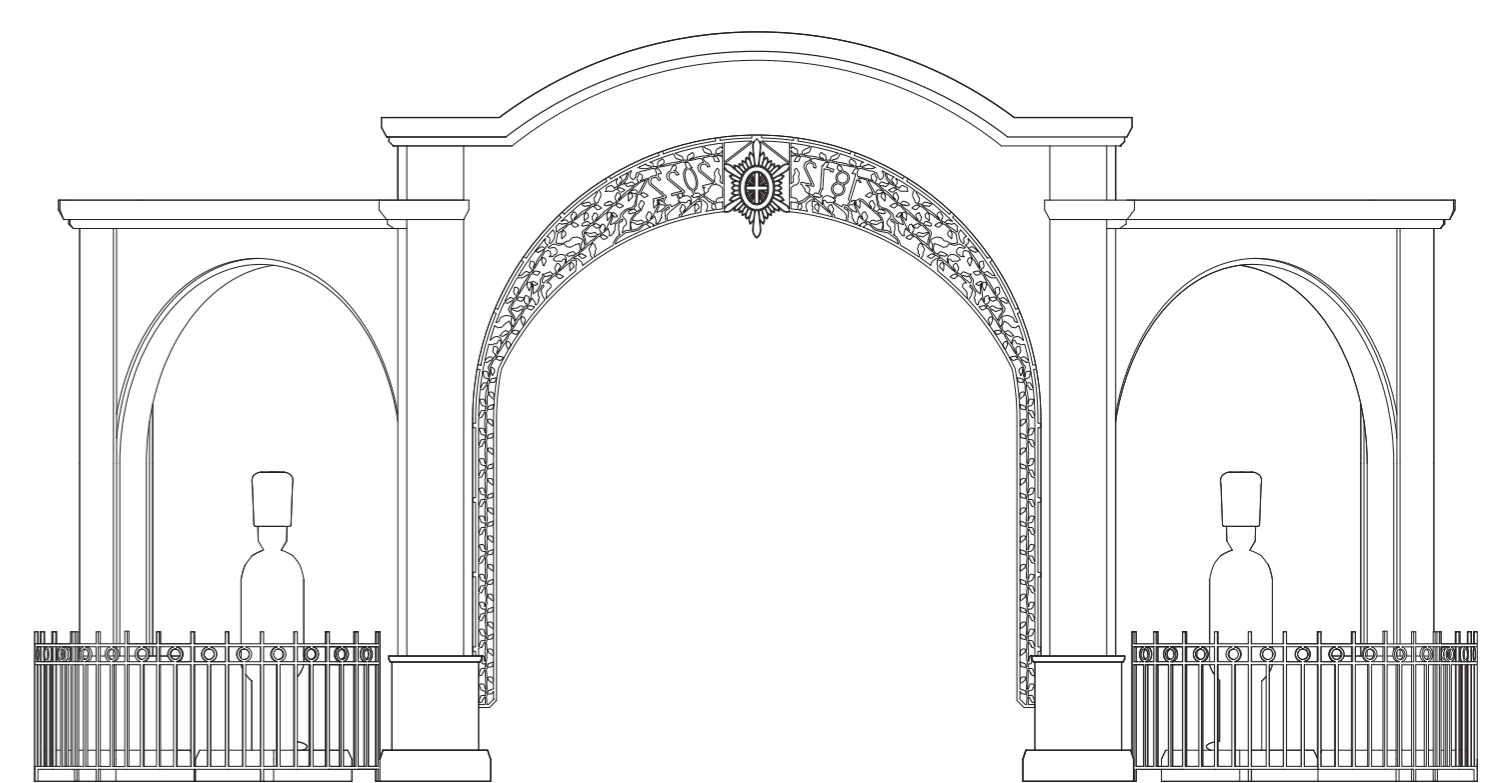
### SENTRY PLACEMENT



FRONT ELEVATION 1:50



SIDE ELEVATION 1:50



BACK ELEVATION 1:50

### DAYTIME IN FALL | FRONT VIEW



### NIGHTTIME IN WINTER | BACK VIEW

